



PEGASUS PG2000D

Double-sided Semi-automatic Probe Station

PEGASUS PG2000D is developed for testing components such as DIODE, MOSFET and IGBT wafers. PEGASUS PG2000D is a probe station with a double-sided, four-wire probe structure. The structure eliminates impedance problem on the probe platform and minimizes the effect on test results. It makes the component under test to be closer to the engineering design requirements



- Robust housing and compact size.
- Supports Windows system, English software interface, real-time mapping graph display.
- Easy-to-use control console and joystick.
- High-precision drive motor provides stable and quiet operating environment.
- Easy-to-maintain modular electronic control mechanism.
- Double-sided probe structure to improve test circuit impedance. Test current up to 30A.
- Applicable to 3" ~ 8" wafers.
- Customized designs available.
- Standard TTL and RS232 communication interface for variety of testers.
- Excellent probing speed and probe marks.

PEGASUS PG2000D

Specifications:

XY axis

Architecture: High-precision circulating ball screw
Travel: 210mm × 210mm
Resolution: 0.5 μ m
Accuracy: $\leq \pm 7$ μ m (203mm)
Repeatability: ± 4 μ m (203mm)

Probe arm

Travel: 10mm
Resolution: 1 μ m
Accuracy: $\leq \pm 2$ μ m
Repeatability: ± 4 μ m

Chuck plate

Material: High insulation artificial stone plate
Wafer size: 3" / 4" / 5" / 6" / 8"
Adjustable angle: $\pm 10^\circ$
Resolution: 0.001°

Test time

Time (ms)		Index Range (μ m)					
PG2000D		500	700	1000	1500	2000	3000
Contact Range (mm)	1	60	65	72	81	89	105
	0.5	50	56	63	72	80	96
	0.3	46	52	58	68	75	91
	0.15	42	46	54	63	70	86

Microscope

Eyepiece: 20X
Objective: 1X~4.5X
Magnification: 20X~90X

Dimension:

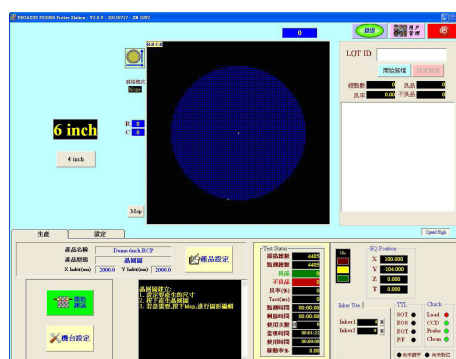
90(D) X 80(W) X 143(H) cm
(Excludes microscope, signal tower and monitor)

Weight:

310kg(Excludes tester)

Options:

Various types of microscopes
CCD camera



English software interface
Real-time mapping graph

PEGASUS INSTRUMENT INC.

5/F., 5, Lane 123, Pao Chung Road Sindian Taipei Hsien 23144 Taiwan
TEL: +886-2-6629-3378 FAX: +886-2-6629-3379 <http://www.pegasusinc.com.tw>

QUATEK® Group

唯一銷售渠道

Taipei: +886-2-27973357
Shanghai: +86-21-64813366

sales@quatek.com.cn
sales@quatek.com.tw