

COMPARTMENTED BOXES

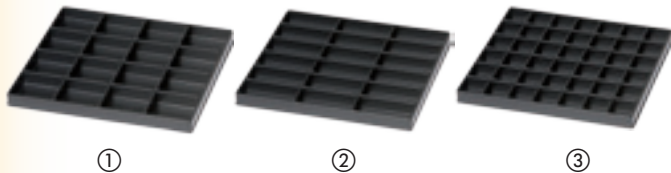
- **Permanent, carbon loaded**, conductive material
- 6/4 compartments
- Stackable

Typical surface resistance $R_s = 10^4 - 10^5 \text{ ohm}$



Part Nr.	Outer Dimensions
5150.830	273 x 265 x 187 mm (W x D x H) 6 compartments drawer dimensions: 261 x 238 x 20 mm

830 box compartment layout - permanent conductive, black



Part Nr.	Inner Dimension	Compartments
① 5150.830.A	61 x 56 mm	16
② 5150.830.B	62 x 36 mm	18
③ 5150.830.C	34 x 36 mm	42



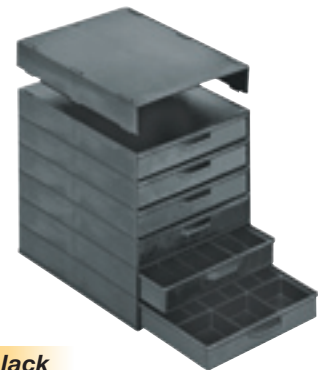
Part Nr.	Outer Dimensions
5150.815	266 x 365 x 305 mm (W x D x H) 4 compartments drawer dimensions: 250 x 340 x 62 mm

815 box compartment layout - permanent conductive, black



Part Nr.	Inner Dimension	Compartments
① 5150.815.A	116 x 160 mm	4
② 5150.815.B	75 x 105 mm	9
③ 5150.815.C	75 x 160 mm	6

Part Nr.	Outer Dimensions
5150.831	266 x 365 x 305 mm (W x D x H) 6 compartments drawer dimensions: 250 x 340 x 40 mm



831 box compartment layout - permanent conductive, black



Part Nr.	Inner Dimension	Compartments
① 5150.831.B	75 x 160 mm	6
② 5150.831.D	77 x 79 mm	12
③ 5150.831.G	45 x 63 mm	25



Part Nr.	Outer Dimensions
5150.810	265 x 355 x 205 mm (W x D x H) 6 compartments drawer dimensions: 250 x 340 x 22 mm

Suitable for the SMD boxes described on page 141.