

# P A T

# PORTABLE APPLIANCE TESTERS

**BATTERY POWERED  
PORTABLE APPLIANCE  
TESTING SOLUTIONS**

**25A  
10A • 100mA  
EARTH BOND**

**500V  
INSULATION**

**110V / 230V  
LEAKAGE  
CURRENT**

**Data Download**

**IEC Lead Check**

**Visual/Fuse Check**



**EASY TO USE**

**PORTABLE**

**FAST**



**FOR FAST, EFFICIENT ELECTRICAL  
SAFETY TESTING**

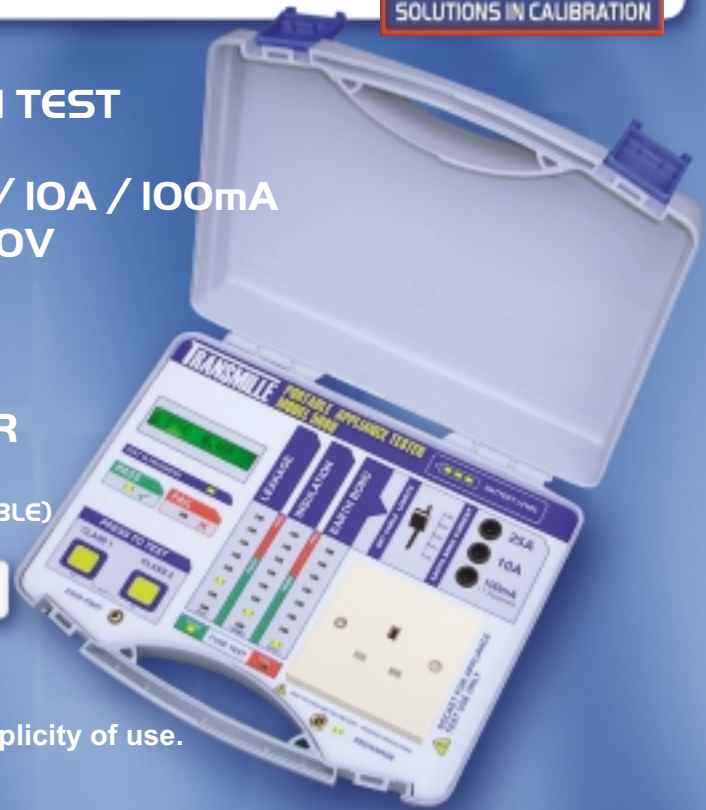
# 5080 PORTABLE APPLIANCE TESTER

ADVANCED BATTERY POWERED PAT



FEATURES...

- ▶ EXTREMELY EASY TO USE
- ▶ ULTRA FAST :: 20s FOR CLASS I TEST
- ▶ RUGGED, PORTABLE DESIGN
- ▶ EARTH BOND CURRENT @ 25A / 10A / 100mA
- ▶ INSULATION RESISTANCE @ 500V
- ▶ LEAKAGE CURRENT @ 230V
- ▶ FUSE TEST
- ▶ VISUAL TEST
- ▶ SUPPLIED WITH FAST CHARGER
- ▶ DATA DOWNLOAD READY  
(OPTIONAL PC SOFTWARE & DATA CABLE AVAILABLE)



## ▶ INSTANT 'ONE CLICK' TESTING

Get your safety testing off to a rapid start with the new concept in portable appliance testing. Transmille has redefined PAT operation for the ultimate in speed and simplicity of use.

The 5080 PAT is always ready to go - with no need to plug into a mains supply. Simply connect the appliance and earth bond lead, and with a single button press start the test sequence instantly. Earth bond current is automatically determined by the socket used, even lead length can be instantly set with a slider control.

100mA Mode for  
I.T. Equipment  
Testing

INS RES 9.65MR

LEAKAGE 0.06mA

E BOND 0.46R

Pressing the **CLASS 1** button sets the 5080 to automatically sequence through a visual check, fuse check, earth bond resistance, insulation resistance and leakage current test for each appliance.

The **CLASS 2** button performs the same sequence without the earth bond test.

INTUITIVE PASS / FAIL  
READING INDICATION  
USING DIGITAL &  
GRAPHICAL DISPLAYS



Pass or fail is clearly shown using bright red/green LED bar displays for each test - this makes reading and understanding the results easy for all levels of users. Pass / fail limits scale automatically with the earth bond current used, the lead length and the test type. Readings are also displayed on a digital LCD.

## ▶ PC CONNECTION :: DATA DOWNLOAD & REPORTS



All tests performed are stored in the 5080 memory together with a unique identifier number and date.

Downloading the results from the 5080 is a snap using the PC connection kit (option). One click is all that is required to download the data and display a report of all your work done. See back page for full details.

## ▶ SPECIFICATIONS

Earth Bond Resistance measurement :  
Insulation Resistance Measurement :  
Leakage Current Measurement :  
Fuse Test :  
Lead Length Correction :  
Battery life :  
Mains Operation :  
Recharge time :  
Internal Memory Capacity :  
Dimensions :

0 to 10 Ohms @ 100mA / 10A / 25A Nominal (5s into S/C) : 3% ± 4 Digits  
0.1M Ohms to 100M Ohms @ 500V : Accuracy 3% ± 4 Digits  
0.1mA to 15mA @ 240V / 50Hz : Accuracy 3% ± 0.2mA  
Pass / Fail : Checks power switch on & fuse OK (using 230V)  
Slider control 1 to 5m  
Typical 500 tests per recharge  
Continuous operation with charger supplied  
6 hours  
1000 Tests (unlimited with PC based storage)  
280mm x 230mm x 80mm : Weight 1.9kgs

Due to continuous development specifications are subject to change

# 6080 PORTABLE APPLIANCE TESTER

## PROFESSIONAL BATTERY POWERED PAT



### FEATURES...

- ▶ EXTREMELY EASY TO USE
- ▶ ULTRA FAST :: 20s FOR CLASS I TEST
- ▶ RUGGED, PORTABLE DESIGN
- ▶ DUAL VOLTAGE 110V / 230V
- ▶ EARTH BOND CURRENT @ 25A/10A/100mA
- ▶ INSULATION RESISTANCE @ 500V
- ▶ LEAKAGE CURRENT @ 230V
- ▶ IEC / EXTENSION LEAD CHECK
- ▶ SELF CHECK
- ▶ FUSE CONTINUITY CHECK
- ▶ VISUAL TEST
- ▶ SUPPLIED WITH FAST CHARGER
- ▶ DATA DOWNLOAD READY  
(OPTIONAL PC SOFTWARE & DATA CABLE AVAILABLE)



100mA Mode for  
I.T. Equipment  
Testing

### ▶ ALL THE FUNCTIONS OF THE 5080 PLUS...

The 6080 adds dual voltage capabilities for complete 110V / 230V compatibility with sockets for each voltage.

The IEC / extension lead check function allows leads to be verified at the press of a button. Using the self check function, the 6080 can be verified using its own built in test facility - simply connect to the self check terminals to verify PAT operation. This unique function avoids the need for a separate test box.

The 6080 also includes larger battery capacity to provide typically up to 700 tests between charging.

### ▶ NO MAINS SUPPLY AVAILABLE ? NO PROBLEM !



AUTOMATICALLY TESTS... Fuse Test • Earth Bond  
Insulation Resistance • Leakage Current  
IN 20 SECONDS

The go-anywhere range of PATs from Transmille can literally save you hours. Firstly, there is no need to waste time locating a mains supply - simply plug in the appliance, clip on the earth bond lead and select **CLASS 1** or **CLASS 2** test. Secondly, within 20 seconds the entire test sequence is complete - unlike other PATs there is no lengthy setup before you can even begin. Earth bond current is detected from the socket used, and test limits are scaled automatically from the earth bond current and lead length settings. Clear red/green LED indicators make reading the test result easy in any situation. Testing really is that quick & easy.

The compact, yet rugged design is ideal for squeezing into those difficult to reach areas around desks, in the workshop or even in the back of your van.

### ▶ SPECIFICATIONS

Earth Bond Resistance measurement :  
Insulation Resistance Measurement :  
Leakage Current Measurement :  
Fuse Test :  
IEC / Extension Lead Correction :  
Lead Length Correction :  
Battery life :  
Mains Operation :  
Recharge time :  
Internal Memory Capacity :  
Dimensions :

0 to 10 Ohms @ 100mA / 10A / 25A Nominal (5s into S/C) : 3% ± 4 Digits  
0.1M Ohms to 100M Ohms @ 500V : Accuracy 3% ± 4 Digits  
0.1mA to 15mA @ 240V / 50Hz : Accuracy 3% ± 0.2mA  
Pass / Fail : Checks power switch on & fuse OK (using 230V)  
Slider control 1 to 20m  
Slider control 1 to 5m  
Typical 700 tests per recharge  
Continuous operation with charger supplied  
6 hours  
1000 Tests (unlimited with PC based storage)  
390mm x 280mm x 110mm : Weight 3.5kgs

# PAT DOWNLOAD & REPORTING SOFTWARE FOR MODELS 5080 & 6080



## FEATURES...

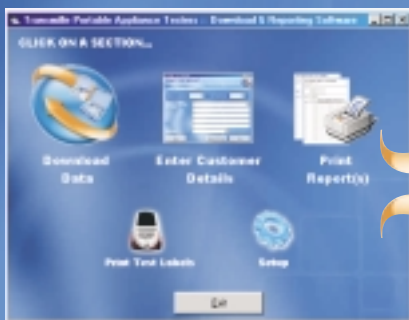
- ▶ EXTREMELY EASY TO USE
- ▶ 'ONE CLICK' DOWNLOAD FEATURE
- ▶ INSTANT REPORT FEATURE (WITH ON SCREEN PREVIEW)
- ▶ STORES COMPLETE TEST HISTORY
- ▶ PRINT TEST LABELS (WITH COMPANY LOGO)
- ▶ EASY REPRINT OF EXISTING REPORTS
- ▶ RECORDS SITE LOCATIONS / CUSTOMER NAMES
- ▶ MICROSOFT WINDOWS 98 / 2000 / XP COMPATIBLE

## ▶ 'ONE-CLICK' DOWNLOAD WITH INSTANT REPORTING

The PAT Download & Reporting Software allows the readings, together with the unique test number and date to be downloaded from the Transmille Model 5080 & 6080 PATs.

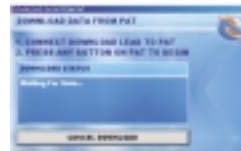
Prior to arriving on site the engineer can pre-print custom or use a standard reel of test labels, making sure the number stored in the PAT corresponds with the first test label number. For each location the first and last label numbers used are recorded on a worksheet for use later when printing reports. For each appliance the PAT will display a test label number and the engineer will apply the label to the equipment.

On return to the office, the data can be downloaded from the PAT. The information recorded on the worksheets can then be entered using the software and test reports viewed and/or printed. For simplicity, when returning to a site each year every appliance is treated as a 'new' test with a new safety test label - this avoids the complexity of trying to locate/identify previously tested appliances which may no longer exist or have been moved to another location.



- Installation requirements
- 5MB Disk Space
  - 1GHz or higher processor
  - Microsoft Windows 98 or higher

### ▶ 1 : DOWNLOAD DATA TO PC



Select Data Download



Press button on PAT to begin

### ▶ 2 : PRINT TEST REPORT



Set Test Numbers & Address



Print / View Report

## ▶ LOW COST SAFETY LABELS WITH COMPANY LOGO



Also included with the PAT software is a label printing facility, including the ability to add a custom logo. Simply enter the test number to start from and the number of labels required to print labels (requires a DYMO LabelWriter thermal label printer, sold separately)

Tel: +44 (0) 1580 890700 • Fax: +44 (0) 1580 890711 • Email: [sales@transmille.com](mailto:sales@transmille.com) • Website: [www.transmille.com](http://www.transmille.com)  
TRANSMILLE Ltd. Unit 4 Select Business Centre, Lodge Road, Staplehurst, Kent. TN12 0QW. UK.

[www.transmille.com](http://www.transmille.com)