

# Sheet Resistance Measuring System Flat Panels



## RT-3000/RG-1000F

- Fully automatic handling/measuring system equipped with glass cassette EV (lifter) and loading stage with Y-axis fork
- Global standard model in FPD sheet resistance measuring system
- Self-test function, measurement position correction and wide range measurement
- Max. glass size : 1,500mm×1,850mm
- 0.1mm meas. resolution and programmable test pattern
- Glass mapping (search) function in cassette
- AGV/RGV/Stocker compatible
- CIM (host) communication, 2-D/3-D mapping software
- **Non-contact eddy current system for ITO and metal films is available (NC-60/RG-1000F)**
- **Combined system with non-contact thickness meter, transmission meter or contact angle is available (option)**

## APPLICATIONS

ITO, metal films and n+a-Si layers for TFT, EL (OLED) and CF

## MEASURING RANGE

RT-3000 (S) : 1mΩ/□ ~ 10MΩ/□

RT-3000 (H) : 10mΩ/□ ~ 1GΩ/□  
(option ; up to 10<sup>12</sup>Ω/□)

## DIMENSIONS

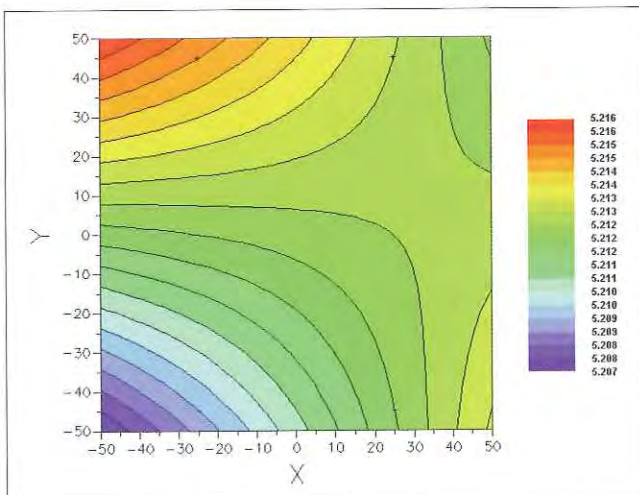
1,900 (W) × 4,800 (D) × 2,100 (H) mm, 1,800kg  
(in case of 1,100mm×1,300mm glass size)

## UTILITIES

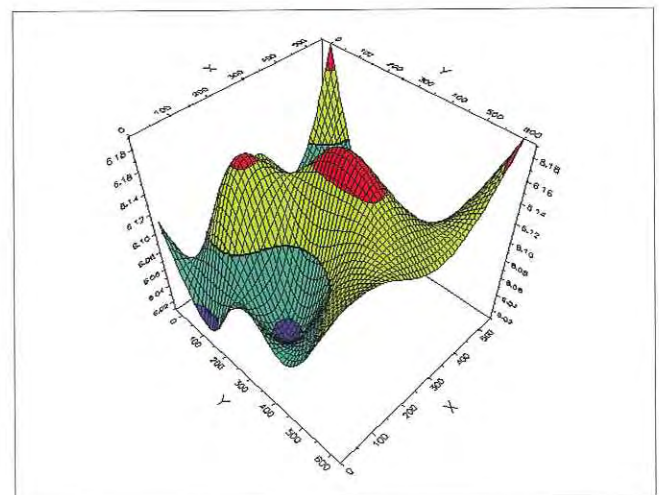
Power supply : \*Select from 100~240V, 50/60Hz, 3kVA

Vacuum : -86kPa

CDA (or N<sub>2</sub>) : 0.7MPa (7.0kgf/cm<sup>2</sup>) with air regulator



2-D



3-D