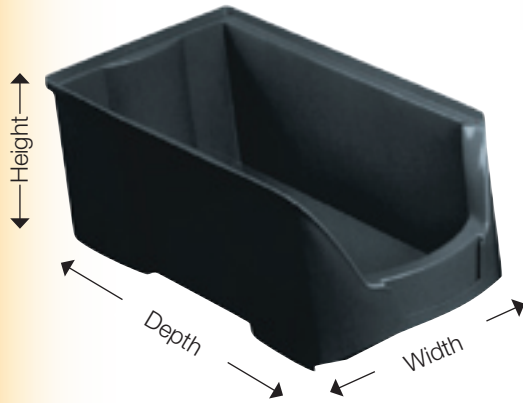


STORAGE BINS

- **Permanent, carbon loaded**, conductive Polypropylene

Typical surface resistance $R_s = 10^4 - 10^5$ ohm



sample application

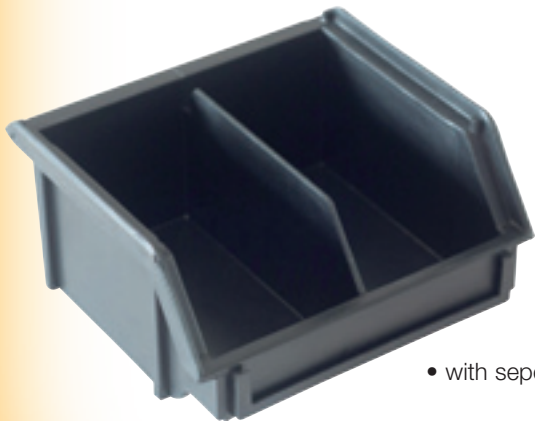


Backside

Part Nr.	Outer Dim. mm (D x W x H)	Inner Dim. mm (D x W x H)	Stacked mm	pcs per box
5320.FA3Z	350 x 200 x 145	280 x 182 x 127	127	12
5320.FA4	235 x 145 x 125	180 x 127 x 108	108	25
5320.FA5	175 x 100 x 75	129 x 87 x 67	67	42

Part Nr.	Outer Dim. mm (D x W x H)	Inner Dim. mm (D x W x H)	Stacked mm	pcs per box
5320.2	500 x 300 x 200	425 x 280 x 183	183	6
5320.3	350 x 200 x 200	280 x 182 x 185	185	8
5320.3Z	350 x 200 x 145	280 x 182 x 127	127	12
5320.4	235 x 145 x 125	180 x 127 x 108	108	27
5320.5	175 x 100 x 75	129 x 87 x 67	67	40
5320.6	95 x 100 x 50	60 x 87 x 44	44	50

(5320.2 and 5320.3 include a handle).



- with separator

Part Nr.	Outer Dim. mm (D x W x H)	Inner Dim. mm (D x W x H)	Stacked mm	pcs per box
5320.6D	95 x 100 x 50	60 x 87 x 44	44	50